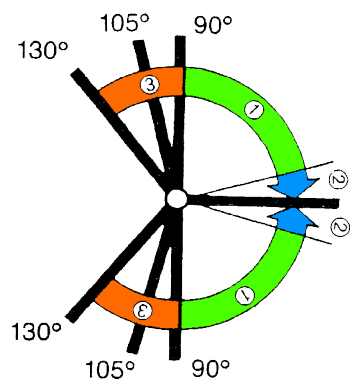
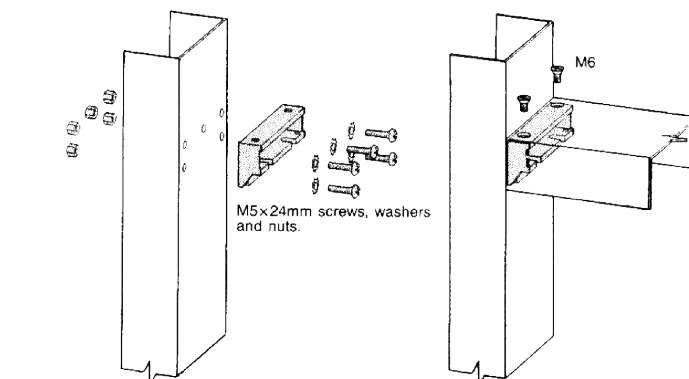
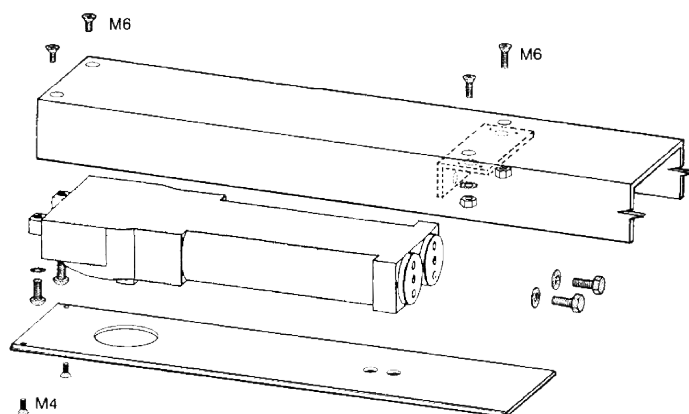
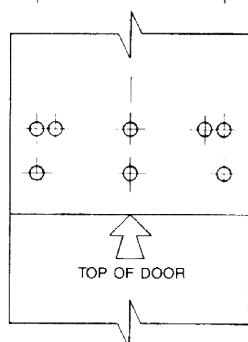
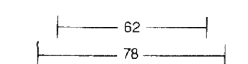
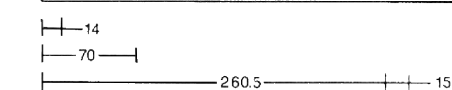
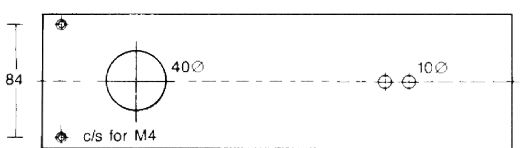
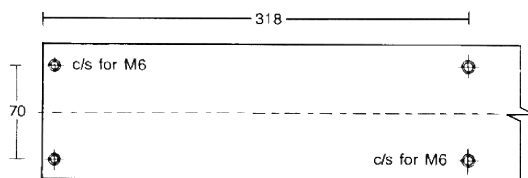
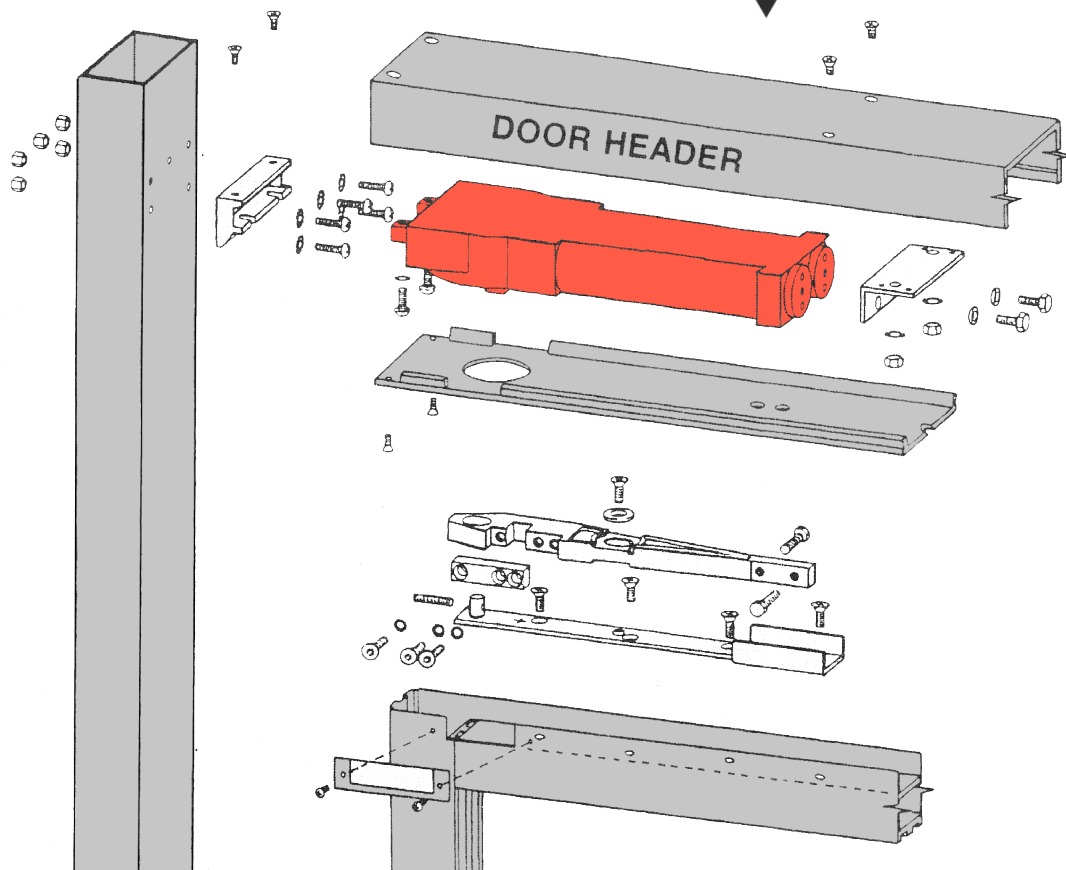


SPEED ADJUSTMENT



- ① CLOSING RANGE
- ② LATCHING RANGE
- ③ BACKCHECK ZONE



M5x24mm screws, washers and nuts.

Select fixing holes most suitable for section and drill clearance size for M5 screws.

34mm minimum
55mm maximum
6mm clearance

* For door rails with 21mm recess,
5mm shim bar is supplied with end-load arms.